



EASYFLAT
SINCE 1892

**FRENCH MANUFACTURER SINCE 1892
STRAIGHTENING SPECIALIST**

Advantage

LEVELLING MACHINE

A STRONG INDUSTRIAL IDENTITY.

Two French industrial entrepreneurs and machine-tool manufacturers, the managers of LISSE and PICOT respectively, created the company EASYFLAT to develop a range of straightening machines in response to developments in the cutting industry.

Founded on the values of dynamism, reliability and practicality, EASYFLAT operates an industrial innovation policy fully focused on performance improvement.

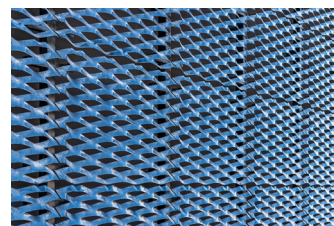
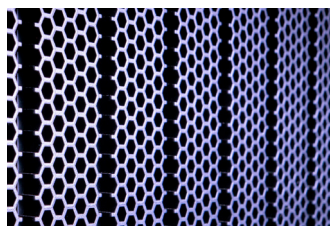
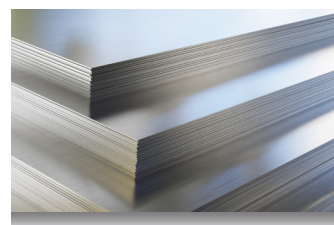
The advantages of EasyFlat Advantage

- No prior technical skills are required: user-friendly and simple NC.
- Streamlined, optimised machine (optimal quality-price ratio).
- 100% electrical: minimal cost of use, no noise disturbance.
- Connected machine.

> THEY TRUST US



> EXEMPLES



EASYFLAT

ZA de Charpenay 69210 LENTILLY - FRANCE
Tél. +33 (0) 4 74 01 85 05 - easyFlat@easyFlat-1892.com

EASYFLAT
SINCE 1892



Designed and manufactured by **EASYFLAT**,

“ADVANTAGE” straightening machines are sturdy, streamlined, 100% electrical and ergonomic, distinguished above all for their easy appropriation and use, even by unqualified operators.

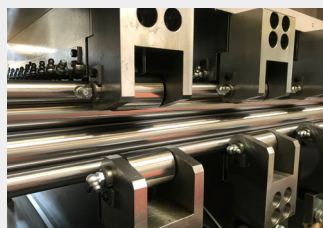
Standard equipment

- > Steerable CNC Touch-screen control
- > Exclusive casing made of Alucobond aluminium composite panels.
- > 100% electric machine.
- > Levelling unit in 50CV4 treated for 60-63 Hrc.
- > Intermediate rolls with counter pressure rolls in 50CV4 treated for 60-63 Hrc included.
- > Lower back-up rolls bearings independently adjustable

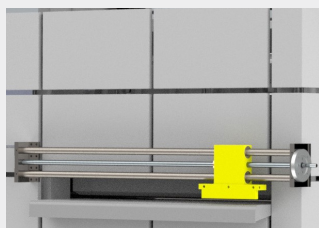
OPTIONS and ACCESSORIES



> Safety zone by light curtains.



> Chrome Plating of the rolls



> Quick cleaning system



> Feeding table

Range : EasyFlat - Rapide

UseFull length (mm)	EasyFlat - Advantage		
	Maximum thickness in (mm)		
	23-36	19-50	17-80
500	2 mm	3,25 mm	10 mm
1500	1,25 mm	2,5 mm	6 mm
2000	1 mm	2 mm	5 mm



> Ecran tactile CNC

EASYFLAT

SINCE 1892



EASYFLAT

ZA de Charpenay
69210 LENTILLY - FRANCE
Tél. +33 (0) 4 74 01 85 05
easyFlat@easyFlat-1892.com

easyFlat-1892.com

* The characteristics are given for steel type S235 (Yield Strength 240 N/mm²) and are not contractual.